

ACT
OR'S
EXPLAINS

CULLUD WATTAH

BY ERIKA DICKERSON-DESPENZA

DIRECTED BY AMANDA WASHINGTON

#aeCulludWattah



SEPTEMBER 21 - OCTOBER 15, 2023

PRODUCTION SPONSORS: AMPERE WEALTH AND JAN BEAVES

THE FEARLESS GALA

ACT
OR'S
EXPRESS

11.4.2023
Save the Date

SUNSET ON THE DOGWOOD CITY

AVAILABLE ON APPLE PODCASTS,
GOOGLE PODCASTS AND ELSEWHERE.



AMPLIFY

S.3

A NARRATIVE PODCAST BY ACTOR'S EXPRESS

MEMBER ORGANIZATIONS



SEASON SPONSORS



Charles Lovidanos Foundation, Inc.



A NOTE FROM THE ARTISTIC DIRECTOR

The Flint Water Crisis is not over.

Despite dropping from daily headlines and the 24-hour cable news cycle, Flint, Michigan, is still in the midst of the crisis that began in April 2014. There has been a massive effort to clean the city's water and much of the water infrastructure has been revamped. Even so, not all the city's lead pipes have been replaced. After missing multiple deadlines for completion, a federal judge set a new final deadline of August 1, 2023. That deadline has still not been met, and there are still at least 1000 Flint homes being serviced by lead pipes.

As of December 2022, lead levels were found to be at 9 parts per billion. While this is below the federal standard of 15 parts per billion, the same federal government has also conceded that there is no real safe level of lead exposure. I mean, how much lead would be acceptable to you in your drinking water?

And despite the progress that has been made, many Flint residents are still skeptical that their water is safe. And honestly, can you blame them? The entire crisis and its subsequent fallout were the results of a deadly combination of corporate greed and government coverup. Many residents knew something awful was happening but lacked the information necessary to identify it and the resources to address it. General Motors and the local and state governments exploited this knowledge vacuum and allowed the problem to be compounded.

In *cullud wattah*, Erika Dickerson-Despenza dramatizes the effects of the crisis on one family of Black women living in Flint and working for General Motors for generations. She digs below the statistics and official talking points to burrow into what it actually means to navigate such a situation – and the hard choices and sacrifices people make to endure the unendurable.

The Flint Water Crisis has revealed a nationwide issue of the inequity of access to clean water. Communities of color and low-income communities are most at risk, even right here in Georgia. In fact, in April 2023, the Environmental Protection Agency announced that \$120 million would be heading to Georgia entities to replace old lead pipes. A Lead Hotline has been established to provide the general public with information about lead, lead hazards and their prevention. That number is 1-800-424-LEAD (5323).

Clean drinking water should not be in question in 2023 in the wealthiest country in the history of the world. And yet it is.

Thank you for coming to *cullud wattah*,

Freddie Ashley
Artistic Director

This program is supported in part by the City of Atlanta Mayor's Office of Cultural Affairs. Major funding is provided by the Fulton County Board of Commissioners. This program is supported by the Georgia General Assembly. GCA also receives support from its partner agency - the National Endowment for the Arts.

ENTER TO WIN A SEASON SUBSCRIPTION TO ACTOR'S EXPRESS

SCAN THE QR CODE
and complete
the form for
your chance to
win!





WrightHomeATL.com/EVENTS

The Winner will be announced on Facebook and Instagram the Monday following the closing of this production.

**THE WRIGHT HOME TEAM IS A LEADER IN THE ATLANTA
REAL ESTATE INDUSTRY AND AN ADVOCATE FOR THE
ATLANTA PERFORMING ARTS COMMUNITY.
WE ARE PROUD TO PARTNER WITH ACTOR'S EXPRESS TO
SPONSOR THEIR 35TH SEASON AND EXCITED TO CREATE
MORE OPPORTUNITIES FOR MORE PEOPLE TO
EXPERIENCE THE BEST OF ATLANTA THEATRE**



Learn More:
WrightHomeATL.com
[@WrightHomeTeam](https://www.instagram.com/WrightHomeTeam)  

CULLUD WATTAH

BY ERIKA DICKERSON-DESPENZA

PRODUCTION SPONSORS: AMPERE WEALTH AND JAN BEAVES

CAST

Asha Basha Duniani
REESEE

Morgan Crumbly
PLUM

Marita A. McKee*
MARION

Parris Sarter*
AINEE

Terry Henry*
BIG MA

Nakia Lambert
REESEE U/S

Naiya Alexis
PLUM U/S

Makallen Kelley
MARION U/S

Kerri Simmons
AINEE U/S

Charmain Howington
BIG MA U/S

CREATIVE TEAM

Amanda Washington
DIRECTOR

Amanda Wansa Morgan
VOCAL ARRANGER

Jelani Akil Jones
CHOREOGRAPHER

Addae Moon
DRAMATURG

Bailey McMclure-Frank**
SCENIC DESIGNER

Katarina Kristensen
COSTUME DESIGNER

Toni Sterling
LIGHTING DESIGNER

Mikaela Fraser
SOUND DESIGNER

Nick Battaglia
PROPS DESIGNER/
SET DECORATOR

Lisa Watson*
STAGE MANAGER

Ash Bingham
CHARGE SCENIC
ARTIST

Seamus M. Bourne
PRODUCTION
MANAGER

English Brackett
TECHNICAL DIRECTOR

D. Connor McVey
PRODUCTION
ELECTRICIAN

Zack Georgian
PRODUCTION
ELECTRICIAN

Justin Kalin
CASTING DIRECTOR

Aliciona Strothers
ASST. DIRECTOR

Katie Hurst
ASST. STAGE MANAGER

Mary Gains
ASST. COSTUME
DESIGNER/
WARDROBE

Khatlin White
ASST. DRAMATURG

Ethan Hall
CARPENTER

Matthew Sand, Max Piper, Zack Georgian, Andres Valencia
ELECTRICIANS

Jacob A. Craig, Keshawn Morgan, Caroline Gammage, Kendall Felix, Connor Maguire, Sarah Ann Burke, Zach Tellez, Edwin Navarrete
CREW

THIS PRODUCTION HAS ONE FIFTEEN MINUTE INTERMISSION.

If you take photographs inside the theatre before or after the performance, please tag the designers in your social media posts.

Originally Developed and World Premiere Production by
The Public Theater
Oskar Eustis, Artistic Director, and Patrick Willingham, Executive Director

cullud wattah was developed during the Lark Play Development Center's 2018 Van Lier New Voices Fellowship tenure (John Clinton Eisner, Artistic Director) & received its first staged reading in October 2018 at Jackalope Theatre in Chicago (Gus Menary, Artistic Director; Nora Leahy, Managing Director). cullud wattah received a Public Studio workshop production March 7-10, 2019 at The Public Theater.

"cullud wattah" is presented by arrangement with Concord Theatricals
on behalf of Samuel French, Inc.
www.concordtheatricals.com



*Appearing through an agreement between this theatre, Actor's Express, and Actors' Equity Association, the Union of Professional Actors and Stage Managers in the United States.

**Represented by United Scenic Artists Local USA Local 829 of the IATSE - The Union representing scenic, costume, lighting, sound and projection designers in live performance.

BIOGRAPHIES

CAST



ASHA BASHA DUNIANI
REESEE

Actor's Express: Debut! **Atlanta:** Synchronicity Theatre (*Eclipsed* 2016, *In the Continuum* 2023). **Regional:** North Carolina Black Repertory Company, Triad Stage Touring Theatre. **Educational:** *The Colored Museum, in the Red & Brown Water, Hurt Village, Detroit* (North Carolina A&T State). **Film/TV:** Warner Bros. Magic Lemonade Productions, Westbrook Media. **Education:** BFA, Professional Theatre, North Carolina A&T State University. Instagram: @asha.b.duniani

67, *Ruined, A'int Misbehavin* (North Carolina A&T State). **Film/TV:** Warner Bros. Magic Lemonade Productions, Westbrook Media. **Education:** BFA, Professional Theatre, North Carolina A&T State University. Instagram: @asha.b.duniani



MORGAN CRUMBLY
PLUM

Monologist, The Living Word (National Black Arts Festival). **Education:** BA, Theater & Performance, Spelman College. **Other:** This spring, Crumbly graduated summa cum laude from Spelman College. She is elated to be making her Actor's Express

debut in *cullud wattah*. @morgan_adia



MARKITA A. MCKEE
MARION

Actor's Express: *Intimate Apparel* (u/s). **Atlanta:** *The Outrage Machine* (u/s) (Essential Theatre), *A Streetcar Named Desire* (Lionheart Theatre), *Living Room: A Modern Love Story* (Pumphouse Players), *Blues for an Alabama Sky* (Live Arts Theatre Company).

Regional: *Collide* (Playwrights Horizon). **Film/TV:** 'We Are Family', 'Today's Docket', 'Similar Taste', 'Snapped' (Oxygen Network), 'Finding Happy' (Bounce TV). **Other:** 2023 Downtown Urban Arts Festival Finalist, 2023 Fade to Black Festival Finalist, 2020 Georgia Theatre Conference Best Featured Performer. Special thanks to God, family, and friends for their continued love and support. Instagram: @iam_marita



PARRIS SARTER
AINEE

Actor's Express: *An Octoroon* (Suzi Award nominee), *Angels in America: Millennium Approaches and Perestroika* (Suzi Award winner), and *BooTycandy* (Suzi Award nominee). **Atlanta:** *Eclipsed* (Synchronicity Theatre, Suzi Award winner), *The Revolutionists*

and *Angry Fags* (7Stages), *The Cake and Square Blues* (Horizon Theatre), *Everybody* (Alliance Theatre), *Women in Jeopardy* (Georgia Ensemble), and *Pros and Cons of Killing your Cult Leader* (The Weird Sisters Project). **Regional:** *Wrong River* (Flint Repertory). *The Revolutionists* (Immediate Project at NC Stage). **Other:** *Unice in Paris: A Nina Simone Play* (Hush Harbor Labs). **Education:** M.A. in Performing Arts, Savannah College of Art and Design.



TERRY HENRY
BIG MA

Actor's Express: *Intimate Apparel*. **Atlanta:** *Mamma Mia* (City Springs Theatre Company), *Good Bad People* (Kenny Leon's True Colors Theatre), *Mirandy and Brother Wind*, *Beyond Reasonable Doubt* (Synchronicity Theatre), *Once On This Island* (Georgia Ensemble

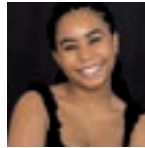
Theatre). *Da Kink In My Hair* (Cobb Energy Center). **Regional:** *Black Pearl Sings* (Actor's Theatre of Charlotte), *The Amen Corner, Home* (Spirit Square), *Ain't Misbehavin'* (Fullerton Civic Light Opera).

Beehive: The 60's Musical (John F. Kennedy Center for the Performing Arts). **Educational Experience:** Teaching Artist for Kenny Leon's True Colors Theatre. **Film/TV:** 'The Miss Pat Show' (BET+), 'Keyshia Cole: This Is My Story' (Lifetime Television), 'Black Mafia Family' (STARZ). **Education:** BA, Communications and Theatre, Johnson C. Smith University. Thank you to my daughter, Judah for your never ending love and support. IG: @Terrytimehenry Facebook: Terry Henry TikTok: @Terrytimehenry



NAKIA LAMBERT
REESEE U/S

Actor's Express: Apprentice Company 2023-2024. **Educational:** *Love and Information, The Blueprint* (Kennesaw State University). **Education:** BA, Theatre and Performance Studies Kennesaw State University. Special thanks to cast, crew, friends and family for all the love and support.



NAIYA ALEXIS
PLUM U/S

Actor's Express: Apprentice Company 2023-2024. **Regional:** *Much Ado About Nothing* (Blue Box Theatre Company), *Reverie* (Women's Fringe Festival). **Educational:** *Medea, Pheromone, Trojan Barbie, School For Wives* (Elon University). **Education:** BFA,

Acting, Elon University. Naiya would like to thank her friends and family for their support. naiyaalexis.com

MAKALLEN KELLEY
MARION U/S

Makallen Kelley is an Atlanta-based actor, writer, and artist who recently received her B.F.A in Theatre Performance from the University of Southern Mississippi. On stage, she has portrayed Madame Arcati in *Blithe Spirit*, Chelle in *Detroit '67*, Actor #4 in *The Stinky Cheese Man*, Titania in *A Midsummer Night's Dream*, Marianne Angelle in *The Revolutionists*, and Lily Miller in *Ah, Wilderness!* She was also seen in other projects as the White Rabbit in *Alice in Wonderland*, Bursitis in *God*, and Sabine in *The Flying Doctor*. She is delighted to be furthering her career as an Acting Apprentice at Actor's Express! Check out her work at makallenkelley.squarespace.com.

KERRI SIMMONS
AINEE U/S

Actor's Express: Debut! **Regional:** *Black Superhero Magic Mama* (Trustus Theater) *No Exit* (Longstreet Theater) *The ThreePenny Opera* (Longstreet Theater) **Education:** BA, media arts and theater (University of South Carolina)



CHARMAIN HOWINGTON
BIG MA U/S

Actor's Express: Debut! **Regional:** *Alice in Wonderland* (The Theatre Mine in Silverton Colorado), *Live Nude Girl* (El Centro Theatre in Los Angeles), *Touch* (A Gray Picture, LLC), and *Repos* (No Limit Films). **Education:** MFA in Acting from

the University of Iowa. She is from Alabama but has recently relocated to Atlanta by way of Los Angeles. Charmain is also an academic advisor and faculty member at Clark Atlanta University's Division of Communication Arts.

CREATIVE TEAM

AMANDA WASHINGTON
DIRECTOR

Actor's Express: *Sunset Baby* and *Crossroads*. **Regional:** Phoenix Theatre Indianapolis and American Shakespeare Center. **Educational:**

Kennesaw State, Berry College (intimacy choreography), Clark Atlanta University (intimacy choreography). University **Education:** MFA in Directing from the University of Southern Mississippi. Learn more about Amanda at www.washingtonamanda.com

AMANDA WANSA MORGAN

MUSIC DIRECTOR

Actor's Express: *The Color Purple*, *Little Shop of Horrors*. Amanda serves as the Artistic Director for the Department of Theatre and Performance Studies at Kennesaw State University, where she is also the Coordinator of Musical Theatre and an Associate Professor. **Education:** MFA, University of Central Florida. www.amandawansamorgan.com

JELANI AKIL JONES

CHOREOGRAPHER

Actor's Express: *The Brothers Size* and *Neat*. **Atlanta:** Theatrical Outfit; (Assistant Director/ Assistant Choreographer) *Five Guys Named Moe*. Dance Canvas; (choreographer), Lift (choreographer). Alliance Theatre, Aurora Theatre, Atlanta Opera, Kenny Leon's True Colors Theatre Company, Horizon Theatre Company, Synchronicity Theatre, Freddie Hendricks Youth Ensemble of Atlanta, Atlanta Ballet, Total Dance Theatre, Ballethnic Dance Company, Axam Dance Theatre Experience. **Regional:** Northern Kentucky Ballet Theatre and Cincinnati Ballet. **Film/TV Experience:** 'Remember the Titans', 'Drumline', 'Stuck on Broke', 'I Can Do Bad All By Myself'. **Education:** Morris Brown College, The University of Cincinnati College Conservatory of Music, The Ailey School, Tri-Cities High School of Visual and Performing Arts Magnet Program. He is currently over the department of dance at North Atlanta High School. Dr. TLS 143 www.jelaniakiljones.com

ADDAE MOON

DRAMATURG

Addae Moon is an Atlanta based playwright, dramaturg, director and cultural worker. He is the Associate Artistic Director at Theatrical Outfit, and a co-founder of the new play development collective Hush Harbor Lab. Addae has served as a resident dramaturg with Working Title Playwright's Ethel Woolson Lab. He was the recipient of the 2015 International Ibsen Award for his dramaturgical work on the project *Master Comic* and the 2014 John Lipsky Award from the International Museum Theatre Alliance (IMTAL) for his immersive play *Four Days of Fury: Atlanta 1906*. Addae was also a member of Alliance Theatre's 2015-2016 Reiser Artists' Lab as co-writer on the immersive project *Third Council of Lyons with Found Stages*. Addae received his BA in Theatre Arts from Clark Atlanta University and an MFA in Playwriting from the Professional Playwright's Program at Ohio University. He is a member of Literary Managers and Dramaturgs of America (LMDA,) Dramatist Guild and The Fence Network.

BAILEY MCCLURE-FRANK

SCENIC DESIGNER

Actor's Express: Debut. **Off Broadway:** *Between the Lines* (Tony Kiser Theatre: Associate Scenic Designer to Tobin Ost); **Regional:** *The Games Afoot* (Naples Players); Co-Designer with Michael Santos), *Becky's New Car* (Naples Players), *A Cardboard And Duct Tape Spectacular* (Bindlestiff Family Circus); **Educational:** *Cinderella*, *The One Act Play That Goes Wrong* (University of West Georgia), *Hay Fever*, *The Importance of Being Ernest* (Georgia Southern University, Guest Artist). **TV/Film:** 'Sesame Street' Season 49 (Assistant Art Director), 'Sesame Street' Season 46-48 (Art Department Coordinator); **Other:** Member of United Scenic Artists Local USA829, IATSE, Assistant Professor of Scenic Design at the University of West Georgia. www.baileymcclure.com

KATARINA KRISTENSEN

COSTUME DESIGNER

Actor's Express: Debut. **Regional:** Capital City Theatre: *Merrily We Roll Along*. **Educational:** University of Alabama: *Small Mouth Sounds*, *The Colored Museum*, and *Die Zauberflöte*. University of Southern Mississippi: *Gem of the Ocean*. **Education:** MFA from the University of Alabama in Costume Design & Production and BFA from the University of Southern Mississippi in Costume Design & Technology. Other: Costume Design Teacher at the

Las Vegas Academy of the Performing Arts, her goal as a designer is to encourage the next generation of artists to understand their human potential and design a visionary future; none of this would be possible without the support and love from her wife and three fur children. katarinamkristensen.wixsite.com/costumes

TONI STERLING

LIGHTING DESIGNER

Actor's Express: *Oh, To Be Pure Again*, *Intimate Apparel* and *Red Speedo*. **Atlanta:** The Alliance Theatre: *Hot Wing King* (ALD). Aurora Theatre: *Play That Goes Wrong* and *Feeding Beatrice*. Theatrical Outfit: *Wolf at the End of the Block* and *Tiny Beautiful Things*. Kenny Leon's True Colors Theatre Company: *Marie and Rosetta*. **Regional:** The Gloucester Stage: *Paradise Blue*. **Educational:** Oglethorpe University: *The Tempest* and *Othello*. **Education:** MFA in Lighting Design from the University of Connecticut. **Other:** Based in Atlanta, she loves to go wherever light takes her. Toni's favorite designs can be viewed on her website. www.tonisterling.com

MIKAELA FRASER

SOUND DESIGNER

Actor's Express: *Red Speedo*, *Lizzie*, *Sunset Baby*. **Atlanta:** Atlanta Lyric Theatre: *Drowsy Chaperone*, *Addams Family*, and *Beehive*. Aurora Theatre: *Play That Goes Wrong*. Horizon Theatre: *Once*, Kenny Leon's True Colors Theatre Company: *Marie & Rosetta* and *Good Bad People*; Synchronicity Theatre: *Ella Enchanted* and *The Bluest Eye*; Theatrical Outfit: *Fires in the Mirror*, *Stew, An Iliad*, and *Tiny Beautiful Things*. **Educational:** Kennesaw State University: *Thumbelina*, *Grace*, or *The Art of Climbing*, *Water by the Spoonful*, and *Bring it On; The Musical*. **Regional:** Factotum (Chicago Lyric Opera) *Shutter Sister* (The Old Globe) and *Wing River* (Flint Repertory Theatre). **Education:** BA from Kennesaw State University Other: Co-founder of Multiband Studios.

NICK BATTAGLIA

RESIDENT PROPS DESIGNER/SET DECORATOR

Actor's Express: *Hedwig and the Angry Inch*, *Jesus Hopped the 'A' Train*, *Prayer for the French Republic*, *Oh To Be Pure Again*, *Urinetown*, *Sunset Baby*, *Desire Under the Elms*, *Lizzie*, *Bootycandy*, *Intimate Apparel*, *Heathers the Musical*, *Fun Home*, *Head Over Heels*. **Atlanta Credits:** Alliance Theatre, Theatrical Outfit, Atlanta Lyric Theatre, Horizon, Pinch N Ouch, Out Front Theatre.

LISA L. WATSON

STAGE MANAGER

Actor's Express: *Jump*, *Carboard Piano*, *Neat*. **Atlanta:** True Colors Theater (Production Manager-present), Jomandi Productions (Production Manager), Theatre in the Square (*Flying West*). **New York:** Negro Ensemble Company, New Federal Theatre, Billie Holiday Theatre. **Education:** Clark Atlanta University, NYU Tisch School of the Arts

ASH BINGHAM

CHARGE SCENIC ARTIST

SEAMUS M. BOURNE

PRODUCTION MANAGER

has worked as a production manager for over a decade, the last four with Actor's Express. He has designed scenery at AE for *Urinetown*, *Red Speedo*, *Skintight*, *Reykjavik*, *Company*, *Wolves*, *Next Fall* and *Spring Awakening*. He has designed scenery or worked in other production capacities throughout Atlanta, including Theatrical Outfit, Aurora Theatre, Center for Puppetry Arts, Atlanta Lyric Theatre, Georgia Shakespeare and Theatre in the Square. Seamus is a three time Suzi Bass Award nominee. When not working, Seamus is Dad to Maddie & Holden and plays on an adult baseball team in Atlanta. smbourne.com

ALICIONA STROTHERS

ASSISTANT DIRECTOR

Actor's Express: 2023-2024 Apprentice Company. **Regional:** *Prom* (Voices Amplified). **Educational:** *Black Lives Matter: 1619 to Now*, *Ten Minutes, Blood at the Root*, *A Lover's Sonnet*, *Finding Your Mind*, *Bright Star* (University of Kentucky). **Education:** BA, Theatre, University of Kentucky.

ENGLISH BRACKETT TECHNICAL DIRECTOR

Actor's Express: *Red Speedo, Heathers, Hometown Boy and Intimate Apparel*. **Regional:** *Mamma Mia* at The Historic Holly Theatre. **Educational:** *Songs for a new world, The Tempest, La La Land, Traces of Memory, The Bra and Panty Club, Pippin, Legally Blonde, Ugly Duckling, Cabaret, Men on Boats, Noises off*. **Education:** AA Theatre, University of North Georgia, BA Theatre, Brenau University, Actor's Express 2021-2022 Apprentice Company <https://englishbrackett.wixsite.com/my-site> Special thanks for the many blessings God has put in my life, my friends and family who support me, and my professors for showing me all that theatre has to offer.

D. CONNOR MCVEY PRODUCTION ELECTRICIAN

Actor's Express: *Sunset Baby, Heathers, Skintight, Significant Other*. **Atlanta:** Dad's Garage, Georgia Ensemble Theatre, Horizon Theatre Company, Oglethorpe University, Pinch 'n' Ouch, Synchronicity Theatre Company. **Regional:** Birmingham Children's Theatre, Birmingham-Southern College, Gainesville Theatre Alliance, Jenny Wiley Theatre, LaGrange College, Terrific New Theatre. **Associate Designs:** Alliance Theatre, Aurora Theatre, South Carolina Children's Theatre. Judge and Advisor, Alabama Conference of Theatre Walter S. Trumbauer Theatre Festival. First Place, Southeastern Theatre Conference Undergraduate Lighting Design Competition, 2015. vektorkat.com

KATIE HURST ASSISTANT STAGE MANAGER

Actor's Express: 2023-2024 Apprentice Company.

Regional: *A Midsummer Night's Dream* (Market House Theatre). **Educational:** *The Revolutionists, Eurydice, The Lightning Thief: The Percy Jackson Musical, Misconduct* (New Work) (Western Kentucky University). *Nice Work If You Can Get It, Ghostlight, The World Goes 'Round* (Stagedoor Manor). **Education:** BA Theatre, Western Kentucky University. Katie would like to thank her family for supporting her and helping her achieve her dreams.

MARY GAINES

ASSISTANT COSTUME DESIGNER/WARDROBE
Actor's Express: 2023-2024 apprentice. **Regional:** *The Lightning Thief: Percy Jackson The Musical, The Servant Of Two Masters, She Kills Monsters, Matilda, Steel Magnolias, Beauty And The Beast* (Stagedoor Manor). **Educational:** *Peter And The Starcatcher, Bright Star, The Three Musketeers, World Premiere: How Am I To Be Heard?* (Piedmont University). **Education:** BA, Theatre Arts, Piedmont University.

KHATELIN WHITE

ASSISTANT DRAMATURG
Actor's Express: AE Apprentice Company 2022-2023. *Hedwig and the Angry Inch; Prayer for the French Republic; Oh, to Be Pure Again* (World Premiere); *Sunset on the Dogwood City* (Amplify: Podcast Plays by Actor's Express). **Regional:** *Star Spangled Girl* (Roxey Regional Theatre). **Radio:** *Suspense!* (Blue Hours Productions). **Educational:** *Suspense! LIVE; Five Savory Dishes; The Wolves; Macbeth; My Cup Ranneth Over; Roommates* (Austin Peay State University). **Education:** BFA, Acting/Directing, Austin Peay State University. For everyone who inspired me. www.khatelinwhite.com

AE STAFF

Freddie Ashley
Artistic Director

Alexander Scollon
Managing Director

Amanda Washington
Associate Artistic Director

Marysa Sutton
Associate Managing Director

Ali White
Marketing Director

Ebony Jerry
Patron Services Manager

Seamus M. Bourne
Production Manager

English Brackett
Technical Director

D. Connor McVey
Production Electrician

Justin Kalin
Casting Director

Sheila Oliver
Artistic Liaison

Nick Battaglia
Resident Prop Designer

Ash Bingham
Resident Charge Scenic Artist

Zack Georgian
Production Carpenter

Summer Stockard
Development Assistant

**Emma Jean Scott,
Olivia Hackney**
Marketing Assistants

**Kati Grace Brown
Ben Cole
Starr Tribune
Sydney Warren
Tori Thompson**
Front of House

Sarah Ann Burke, Naiya Alexis, Jacob A. Craig, Kendall Felix, Caroline Gammage, Katie Hurst, Kacper Kuzimski, Nakia Lambert, Connor Maguire, Keshawn Morgan, Edwin Navarette, Ja'Kayla Meeks, Aliciona Strothers, Zach Tellez, Ray Ward
Apprentice Company

Quinn Xavier Hernandez, Suehyla E. Young
Commissioned Playwrights

BOARD OF DIRECTORS

Patrice Brown
Warner Media

Kevin Dew
Community Volunteer

Jennifer Gelder
Budget Rent a Car

Arlene Glaser
The Coca-Cola Company

Kevin Harry
Actor

Anne Hayden
Community Volunteer

Amy Hollibaugh
Nora Wealth

Andrea Ivory
UPS

Melissa Moore
Partners in Health

Jesse Peel, MD
Community Volunteer

Jennie Sailers
Community Volunteer

David Schoenberg
Law Office of David
Shoeburg

Chris Schneider
Vice Chair, Thompson Hire

Charles Stevens
Counter Narrative Project

Carlos Toledo
Centers for Disease
Control*

Mary Anne Walser
Atlanta Fine Homes
Sotheby's International

Aaron Watson
Thompson Hire

Angie Weiss
Humana

Ashley Williams
Secretary, ImagineX
Consulting

Mark Williamson
Altson & Bird LLP

*This director is serving in a personal capacity and is not fulfilling official CDC duties.

SEASON 36

EVERYBODY'S TALKING ABOUT JAMIE

FEBRUARY 17 - MARCH 3, 2024

BOOK AND LYRICS BY TOM MACRAE

MUSIC BY DAN GILLESPIE BELLS

LIBRETTO AND BOOK BY JONATHAN BUTTERELL

DIRECTED BY FREDDIE ASHLEY

←.....● SAY GAY AND STAND OUT!

GETTING EVEN HAS NEVER BEEN MORE FUN



MERCURY

APRIL 6 - APRIL 28, 2024

BY STEVE YOCKEY

DIRECTED BY MELISSA FOULGER

BLUES FOR AN ALABAMA SKY

JUNE 1 - JUNE 23, 2024

BY PEARL CLEAGE

DIRECTED BY AMANDA WASHINGTON

←.....● THE GREATEST PLAY BY ATLANTA'S FAVORITE PLAYWRIGHT

IN HERE, LIFE IS BEAUTIFUL



CABARET

JULY 27 - AUG 25, 2024

MUSIC BY JOHN KANDER

LYRICS BY FRED EBB

BOOK BY JOE MASTEROFF

DIRECTED BY FREDDIE ASHLEY

A THIRD WAY

OCT 5 - OCT 27, 2024

BY LEE OSORIO

DIRECTED BY LAUREN MORRIS

←.....● WHAT'S WRONG WITH TRYING NEW THINGS?



SUBSCRIPTIONS ARE AVAILABLE ONLINE AT WWW.ACTORS-EXPRESS.COM OR BY SCANNING THE QR CODE.

ACTORS EXPRESS

ANNUAL FUND

EXECUTIVE PRODUCER (\$10,000+)

Jan Beaves
Bruce Cohen
Corky & Roger Gelder

Anne Hayden
Terry Hildebrand
Jessica Linden

Bob & Margaret Reiser
Jennie Sailers
Christine Tryba-Cofrin &

David Cofrin
Mark Williamson
Steve Yockey

PRODUCER (\$5,000-\$9,999)

Meredith Bell
Stephen Michael Brown & Dr.
Bayley Royer
Jane Boynton
Kevin Dew & Hal Platt

Margaret Graff & Richard
Higgins
Eunice Luke
Dr. Jesse Peel
Barbara & Isaiah Rosenblit

Kirk Rich
David Stevens
Christine Schneider
Charles Stephens
Susan Stiefel

Russell Tippins & Randy New
Mary Anne Waiser
Clark Weisner
Donna Willis

ASSOCIATE PRODUCER (\$2,500-\$4,999)

Anonymous
Patrice Brown
Dr. Laura Beatty
Jennifer Gelder-Rich
Arlene Glaser
Brent Huff & Mike Gardner
Kevin Harry

Amy Hollibaugh
Andrea Ivory
John Halaby
Glynn Martin and
Mark Worrel
George Jennison
Eunice Luke

Blake McGee and Carlos
Toledo
Mr. Kevin Todd
Melissa Moore
Maura Rozik
Jane Saral
Kristen & Jordan Silton

David Schoenberg
Donna Schwartz
Charles Stephens
Aaron Watson
Angie Weiss
Ashley Williams
Steven Yockey

DIRECTOR (\$1,000-\$2,499)

Lois Blonder
Angela & Eric Cantor
Bryan Cohn
Carol Comstock & Jim Davis
Bryan & Barbara Fields
Budget Rent-A-Car of Atlanta
Theo Harness
Elaine & Ingo Hentschel

Barry & Linda Hirsch
James Starr Moore
Memorial Foundation
Roger Jordan
George Jennison
Maura Kozik
George & Ellen Nemhauser
Kevin Mason

Karin & Jacques Mebius
Puffin Foundation
RoseMarie Mason
Alan Schreihofer,
In Memory of Cyndy
Schreihofer
Alex Smith
Alexander Scollon

Ken Skaltzky
Steven J Stern
Erien Terry
Warren Gump
Alexander White
Ronnie and Howard Zand-
man

DESIGNER (\$500-\$999)

Atlanta Jewish Foundation
Amy Aldredge
George Boyd
Jeanie & Bob Blalock
Angela T. Cantor
Pamela H. Chawkin
Bud Carter & Kay Copilevitz
Marjorie F Cooper

Jack Driskell
Lacey Elmore
Elizabeth Ettl
Marla Franks
John Ford
Jackie Goodman
Gutschenritter
Amy Hollibaugh

Dr. Linda Hubert
Barbara Kruger
Dan Moore
Sharon & Dave Schachter
James Steinberg
Karin Stern
Sharon Schachter
Ken Skaltzky

Robert Thompson & John
Stegall
P. Dean Surbey
Marilyn Surbey
Mark K. Taylor
Tuxox, LLC
Margaret Weiss
Mr Paul White

STAGE MANAGER (\$250-\$499)

Margaret Baldwin
Steven L. Brown
Lee Buechele
Mr. Leroy J. Buechele Jr.
Cheryl and David Eppsteiner
Willis Gaithe
Deirdra Glover
David Greenberg
David Guthrie
Rebecca Jarvis

Jeffery Jones
Bill Kahnweiler
Dennis R Kemp & Lua
Blankenship
Cynthia McCConnell
Sharon Pauli
Lois Reitzes
Susan Roe
Mr. Charles Rice
Wolfgang Schmitz

John A. Scott
Mr Bill Scollon
Dr. Harry & Ms. Karen
Strothers
James & Patricia Sykes
Tom Slovak
Ken Skaltzky
Marilyn Surbey
Joseph Stabile
Ambrose Tabb

Judy Tabb
Debra & Scott Pyron
Jeanne Wood
Bary Etra and Janice Wolf
Allen W. Yee, In Honor of
Arlene Glaser
Howard Yorek

PLAYER (\$100-\$249)

Anonymous
Atlanta Jewish Foundation
Richard Augusta and Robert
Giacomini
Nina Allen
Janice E. Akers
Freddie Ashley
Freddie Ashley
Andrew Benator
Stuart Berkowitz
Steven Berman
William Bishop
Anna Blumenthal
Jack Brassell
Sean Bryan
Charlotte Brkiown
Harold Brody
Janette Brock
Jackie Bufkin
Marion Bunch
Caitlin Cain
Brian & Kim Cain
Ms. Carol Wien
John Carroll
David Centofanti
Dawn Clark-Plowman
J A Crabb
Cindy Cohen
Jeffery R. Craver

Amanda Crowell
Marjorie F Cooper
Mr. Andrew Cuomo
Megan Cramer
Mr Bruce Davidson
Linda Davidson
Pat Del Rey
William H Dorsey
Lisa Dobbs
Bob & Betty Edge
Annie Elliott
Margaret Freedman
Steven Freedman
Mark Fritz
Neel Gandhi
Nancy Gardner
Philip Gibson
Joyce Glucksman
Jane Gutschenritter
Charles Hacker
Jr Hawkins
Quinn Xavier Hernandez
Patricia Heppburn
Johanna M. Hinman & Lisa Carlson
Barbara Howie
Samuel A. Hudson
Joseph L. A. Hughes
Joseph Hughes
IBM Employee Services Center

Andrea Jones
Michael Ridgway Jones
Tilda Kaplan
James Kieffer
Scott Lange
Mr. Henry Lewis
Dr Nancy Levine
Janet & James Love
Deanna Leader
Jay Levin
LiveTheGoals
Sari Marmur
John McConnell
Michael McGee
Penelope & Raymond McPhee
D. Connor McVey
Pam Meredith
Thomas Mew
Libby Mickle
Ron Middleton
George Munsterman
Patrick Murray
Sharon Neulinger
Donald Newsome
Leonard Pallats
Martha Mattingly Payne
Nancy Perk
Paul Phan
Laurie Pysczynski

Cynthia J Ratcliff
Mary Ramsey
Brenda Rawlin
Doyle Reynolds
Hollie Rivers
Karen Robinson
Bradley Rudy
David Sanders
Elizabeth Morgan Seigel
Bill & Barb Scollon
Susan E Shapiro
Steven J Stern
Donna Sherman
Jenny Shoemaker
Monica Shum
Hani Stempler
David Sue
Michael Swikata
Barbara Taylor
Leslie Taylor & David Pratt
Marc & Shelly Tanenbaum
Robert Thompson
Joe Vella
Richard Vitaris
Susan & Hal Walker
Tracey Washington
Janice A Wolf
Mary Yoder

This list reflects donations made between June 1, 2023 and September 1, 2023. We regret that errors sometimes occur. If there is an error with your listing, please contact Associate Managing Director Marysa Sutton at marysa@actorsexpress.com

SEASON SPONSORS

PEER TO PEER CAMPAIGN SUPPORTERS

Kate Abraham	Gena Cox	Madeline Levinson	Elizabeth Quinn
Rona and Gus Baker	Shannon DeMar	Mallom Ligon	Jose Roque
Stacye Baker	Rob Dillard	Jhon Lopez	Emma Sizelove
Tracy Barash	Ashley Dwarshuis	Margaret M. Ivory	Christopher Stark
Lawrence Bemmett	Paige Earhart	Ivette M. Lopez	TaRessa F. Stovall
Valerie Bernard	Katherine Finney	Rachel Maree	Courtney Sweeney
Trista Bingham	Rita and Matt Geller	Jennifer Mirgorod	David Toledo
Johnson Bowie	Damita Holbrook	Austin Montague	Carlos Toledo and Blake
Amanda Brodie	Natalie Holly-Purviance	Reid Montague	Ingris Travis James
Nassouri Brown	Jeffrey Iles	Michael Murray	John Waymire
Ronnisha Brown	Andrea Ivory	Clemmit Newsome	Kerra Whitmill
Patrice Brown	Jordan Jaked Carrier	Hikaru Nishimae	Joseph Wyrzykowski
William Bruner	Shaun Keister	Courtney Price	Steve Yockey
Marlon Burnley	Tony King	Kamala Prince	Hunter Young
Jake Cohen	Torrae Lawrence- Mitchell	Lew Purifoy & Mary Ramsey	

THE A LIST

These donors support Actor's Express with a monthly pledge:

Glenn Allen	Charles Hacker	Alex Scollon
Steven Berman	Christopher Hester	Bill & Barbara Scollon
Lee Buechele	Cathy Holbrook	Susan Slemenda
Susan C. Walker	Joseph Hughes	Don Spencer
Angela Cantor	Rife Hughey	Chandra Stephens-Albright
Scott Clodfelter	John Hutchinson	Steve & Karin Stem
Marjorie Cooper	John Hutchinson	Susan Stiefel
Jo Crabb	Rebecca Leary Safon	Marysa Sutton
Megan Cramer	Melissa Moore	Jayne Thraen
Diane Durgin	G Morgan Timmis	Richard Vitaris
Anne E Hayden	Ryan Mulderig	Clark Weisner
Barry Etra	Sharon Schachter	Donna Willis

ACTOR'S EXPRESS LIFETIME SUBSCRIBERS

Jeff Cleghorn	Amy Kohan	Russell Tippins
Mable Denise Dotson	Thomas Menear	

INSTITUTIONAL SPONSORS

AMB Group	Equality Foundation of Georgia	The Coca-Cola Company
Arcadia Sales Group	Fulton County Board of Commissioners	The Counter Narrative Project
Charles Loridans Foundation Inc.	Georgia Council for the Arts	The Shubert Foundation
City of Atlanta Mayor's Office of Cultural Affairs	Holland IT	Thompson Hine LLP
Community Foundation for Greater Atlanta	IBM	Warner Bros. Discovery
Metropolitan Atlanta Arts Fund	Imlay Foundation	
	National New Play Network	

SPECIAL THANKS


Joseph P. Monaghan III, Andrea Ivory, Patrice Brown, Kennesaw State University, and Shakespeare Tavern Playhouse

WABE 90.1





CITY LIGHTS

LOIS REITZES • 11A-12P

 @LoisReitzes

 @wabeatl

 @wabeatl

 wabe.org

**CONGRATULATIONS TO THE
CAST AND CREATIVE TEAM OF**

CULLUD WATTAH

**FROM YOUR FRIENDS AT
AMPERE WEALTH MANGEMENT**

Margaret Graff
CFP®, CAP®, ChFC®, CLU®, AMPA®
Private Wealth Advisor
855.999.2820

999 Peachtree St NE, Ste 2820
Atlanta, GA 30309
margaret.m.graff@ampf.com
CA Insurance #0M63007

Ampere Wealth Management
A private wealth advisory practice of
Ameriprise Financial Services, LLC.

Ameriprise 
Financial

Ameriprise Financial Services, LLC. Member FINRA and SIPC.

© 2023 Ameriprise Financial, Inc. All Rights Reserved.